



ORACLE APPLICATIONS

Changing the Java Forms Color Scheme

IMSS

6/23/2011



ORACLE APPLICATIONS

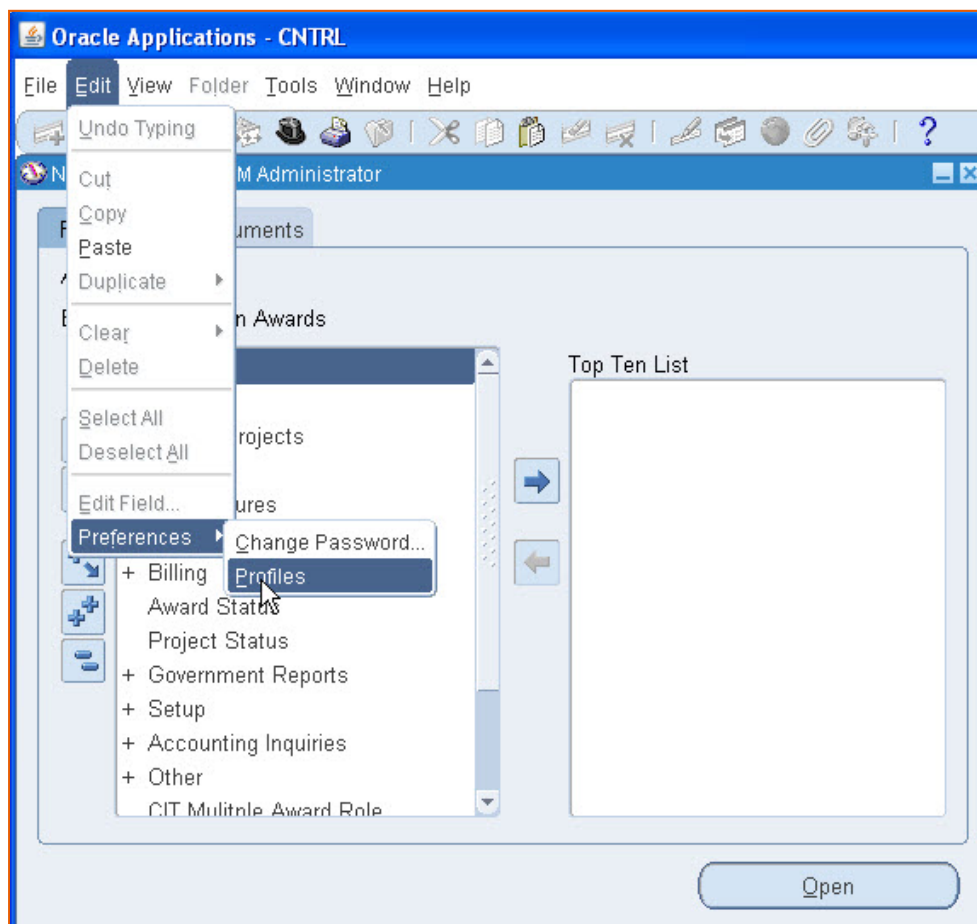
Changing the Java Forms Color Scheme

Not liking the color of the forms in the Java forms for Oracle Applications? You can personalize the color scheme by following just a few steps.

Navigation

The Java forms are those forms that open up when you use certain Oracle Responsibilities. These are not the web forms that you see when you first login to Oracle.

The default color scheme is called *swan*. To change the default color scheme choose **Edit > Preferences > Profiles**



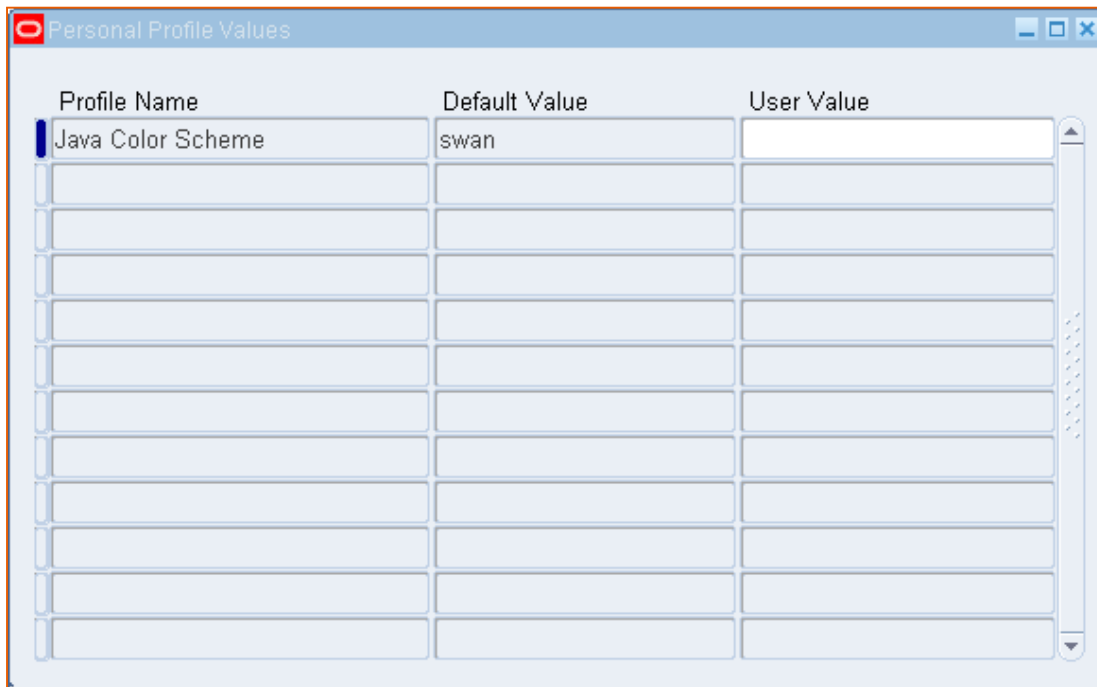
This will open the *Personal Profile Values* form.

Personalizing the Java Color Scheme

When you first open the form it will be blank. To query up the profile that controls the colors click on the ***Profile Name*** column and hit the ***F11*** key.

In the column type in ***Java Color Scheme*** and then click on ***Ctrl F11***.

You should now see:



Profile Name	Default Value	User Value
Java Color Scheme	swan	

In the ***User Value*** column use the list of values (LOV) to choose a different color scheme and then save. The change will not take place until after you have exited the Oracle Java forms.